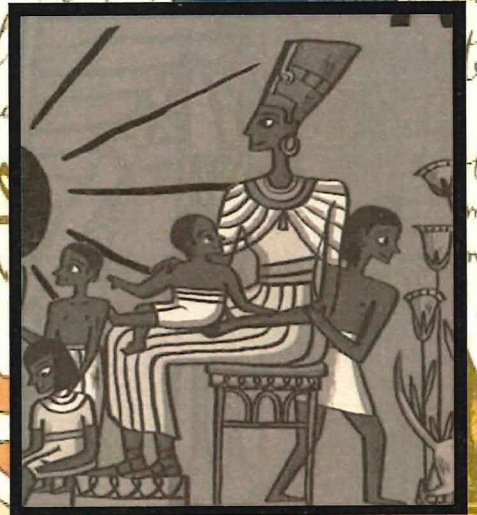


Spring Term 2026

Year Three

During the Spring Term we will travel back over 5000 years to discover what life was like among the pyramids of Ancient Egypt. Our lessons are set to be filled with Pharaohs, Sphinx and a Mummy or two as we travel the curriculum from subject to subject.



English

Using a range of Egyptian themed novels to inspire our writing, this term we will write in a range of styles including:

- Setting Descriptions
- Scientific Experiments
- Instructions
- Characterising Speech

Mathematics

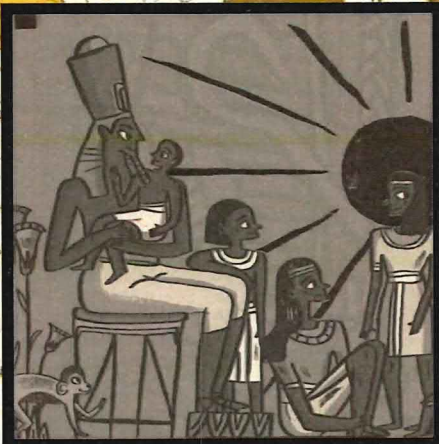
We will continue our work looking at multiplication and division before moving on to explore perimeter within our measurement sessions. Within Spring Two our studies will cover fractions and capacity and mass.

Science

Within our science lessons this term we will be studying light whilst refining our skills working scientifically.

Spelling, Punctuation and Grammar

This term we will continue to work on our 'SPAG' skills as an introduction to our English sessions. Topics will include: spelling rules, conjunctions, noun phrases and more.



Foundation Subjects

We will use our foundation subjects to truly develop our studies of Ancient Egypt. Across the curriculum we can look forward to the following:

D&T: Pneumatic Toys

History: Ancient Egypt

Art: Egyptian Art

Computing: Animation

French: Counting beyond 20 and the alphabet

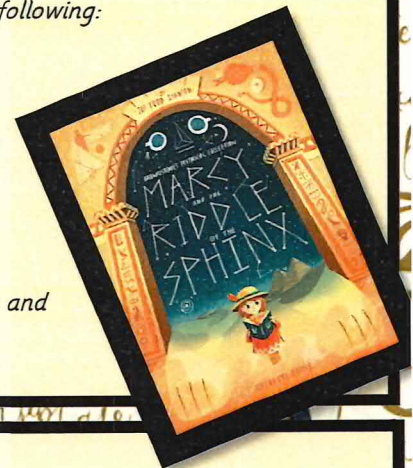
Personal Development: Dreams and Goals

Healthy Me

RE: Islam and Judaism

PE: Using space through direction, levels, balances and Pathways.

Music: Latin music



HOME CHALLENGE

For our Home Challenge this term we would like each member of the class to get involved in creating a project or presentation on something they are interested in. This can take any format such as a presentation, poster, model or story and should be in school for the week beginning

23.03.26

Support

Please support your child by encouraging them to complete their Reading Journal and listening to them read. You may also assist in their learning of Times Tables and this can be revised through Times Tables Rockstars. The login details for this can be found in their 'Morning Maths' book. If you would like to contact me via email, please use the following address:
hello@stbreock.org.uk